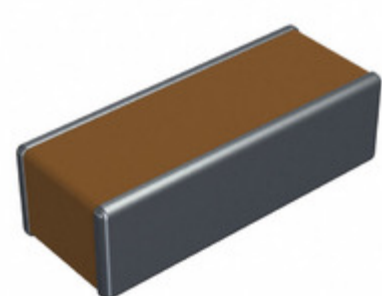


0612YC224MAT2V



Part Number: 0612YC224MAT2V
Manufacturer: AVX Corporation
Description: CAP CER 0.22UF 16V X7R 0612
Data sheet: [Low Inductance Capacitors \(RoHS\)](#)

RoHS Status: Lead free / RoHS Compliant
Ship From: Hong Kong
Shipment Way: DHL/Fedex/TNT/UPS/EMS

Images are for reference only.
 See Product Specifications for product details.
 Buy 0612YC224MAT2V with confidence from
 Component-World.HK, 1 Year Warranty

[Request For Quotation](#)

PRODUCT PARAMETER

Part Number	0612YC224MAT2V	Manufacturer	AVX Corporation
Description	CAP CER 0.22UF 16V X7R 0612	Lead Free Status / RoHS Status	Lead free / RoHS Compliant
Quantity Available	125075 pcs	Data sheet	Low Inductance Capacitors (RoHS)
Category	Capacitors	Voltage - Rated	16V
Tolerance	±20%	Thickness (Max)	0.037" (0.94mm)
Temperature Coefficient	X7R	Size / Dimension	0.063" L x 0.126" W (1.60mm x 3.20mm)
Series	-	Ratings	-
Packaging	Tape & Reel (TR)	Package / Case	0612 (1632 Metric)
Operating Temperature	-55°C ~ 125°C	Mounting Type	Surface Mount, MLCC
Moisture Sensitivity Level (MSL)	1 (Unlimited)	Manufacturer Standard Lead Time	10 Weeks
Lead Style	-	Lead Spacing	-
Lead Free Status / RoHS Status	Lead free / RoHS Compliant	Height - Seated (Max)	-
Features	Low ESL (Reverse Geometry)	Detailed Description	0.22µF ±20% 16V Ceramic Capacitor X7R 0612 (1632 Metric)
Capacitance	0.22µF	Applications	Bypass, Decoupling

Component-World.com is a Reliable Stocking Distributor of Electronic Components. We specialize in all AVX Corporation series electronic components. We have 125075 pieces of AVX Corporation 0612YC224MAT2V in stock available now. Request a quote from electronics components distributor at Component-World.com, our sales team will contact you within 24 hours.
 RFQ Email: info@Components-World.com

RELATED PRODUCTS

	Part#: 0612YC473KAT2S Description: CAP CER 0.047UF 16V X7R 0612	Manufacturers: AVX Corporation	RFQ
	Part#: 0612YC105MAT2A Description: CAP CER 1UF 16V X7R 0612	Manufacturers: AVX Corporation	RFQ
	Part#: 0612YC334KAT2V Description: CAP CER 0.33UF 16V X7R 0612	Manufacturers: AVX Corporation	RFQ
	Part#: 0612YC104MAT2V Description: CAP CER 0.1UF 16V X7R 0612	Manufacturers: AVX Corporation	RFQ
	Part#: 0612YC104MAT2A Description: CAP CER 0.1UF 16V X7R 0612	Manufacturers: AVX Corporation	RFQ
	Part#: 0612YC224MAT2W Description: CAP CER 0.22UF 16V X7R 0612	Manufacturers: AVX Corporation	RFQ
	Part#: 0612YC104KAT4V Description: CAP CER 0.1UF 16V X7R 0612	Manufacturers: AVX Corporation	RFQ
	Part#: 0612YC224MAT2A Description: CAP CER 0.22UF 16V X7R 0612	Manufacturers: AVX Corporation	RFQ
	Part#: 0612YC472KAT2U Description: CAP CER 4700PF 16V X7R 0612	Manufacturers: AVX Corporation	RFQ
	Part#: 0612YC223KAT2U Description: CAP CER 0.022UF 16V X7R 0612	Manufacturers: AVX Corporation	RFQ
	Part#: 0612YC473KAT2W Description: CAP CER 0.047UF 16V X7R 0612	Manufacturers: AVX Corporation	RFQ
	Part#: 0612YC334KAT2A Description: CAP CER 0.33UF 16V X7R 0612	Manufacturers: AVX Corporation	RFQ
	Part#: 0612YC334KAT2W Description: CAP CER 0.33UF 16V X7R 0612	Manufacturers: AVX Corporation	RFQ
	Part#: 0612YC224KAT2A Description: CAP CER 0.22UF 16V X7R 0612	Manufacturers: AVX Corporation	RFQ
	Part#: 0612YC474KAT2V Description: CAP CER 0.47UF 16V X7R 0612	Manufacturers: AVX Corporation	RFQ
	Part#: 0612YC474KAT2A Description: CAP CER 0.47UF 16V X7R 0612	Manufacturers: AVX Corporation	RFQ
	Part#: 0612YC105KAT2A Description: CAP CER 1UF 16V X7R 0612	Manufacturers: AVX Corporation	RFQ
	Part#: 0612YC473KAT2V Description: CAP CER 0.047UF 16V X7R 0612	Manufacturers: AVX Corporation	RFQ
	Part#: 0612YC224KAT2V Description: CAP CER 0.22UF 16V X7R 0612	Manufacturers: AVX Corporation	RFQ
	Part#: 0612YC104MAT2W Description: CAP CER 0.1UF 16V X7R 0612	Manufacturers: AVX Corporation	RFQ

Related keywords for 0612YC224MAT2V

AVX Corporation 0612YC224MAT2V	0612YC224MAT2V distributor	0612YC224MAT2V supplier	0612YC224MAT2V price
0612YC224MAT2V download datasheet	0612YC224MAT2V datasheet	0612YC224MAT2V stock	buy 0612YC224MAT2V
AVX Corporation 0612YC224MAT2V	AVX Corporation [MIL] 0612YC224MAT2V		